

# Fayetteville, AR | CITY SCORECARD



placesforbikes

## 2020 OVERALL SCORE

**3.1** The overall score is based on Ridership, Safety, Network, Reach and Acceleration. It includes publicly available data and data gathered from our Community Survey, City Snapshot, and Bicycle Network Analysis.

★★★★★

## SAFETY |

Measures how safe it is and feels to ride a bike.

**2.6**

|                                  |     |
|----------------------------------|-----|
| All mode fatalities and injuries | 1.5 |
| Bicycle fatalities and injuries  | 3.5 |
| Perceptions of safety            | 3.2 |

★★★★★

## REACH |

Measures how well the bike network serves everyone equally.

**1.8**

|                                   |     |
|-----------------------------------|-----|
| Demographic gap in BNA            | 1.4 |
| Bicycle commuting rates by gender | 3.1 |

★★★★★

## RIDERSHIP |

Measures how many people are riding.

**1.7**

|                          |     |
|--------------------------|-----|
| Bicycle commuting        | 0.5 |
| Recreational bike riding | 2.5 |
| Perceptions of bike use  | 2.6 |

★★★★★

## NETWORK |

Measures how well the bike network connects people to destinations.

**2.4**

|                                |     |
|--------------------------------|-----|
| Bicycle Network Analysis (BNA) | 2.0 |
| Perceptions of network quality | 3.8 |

★★★★★

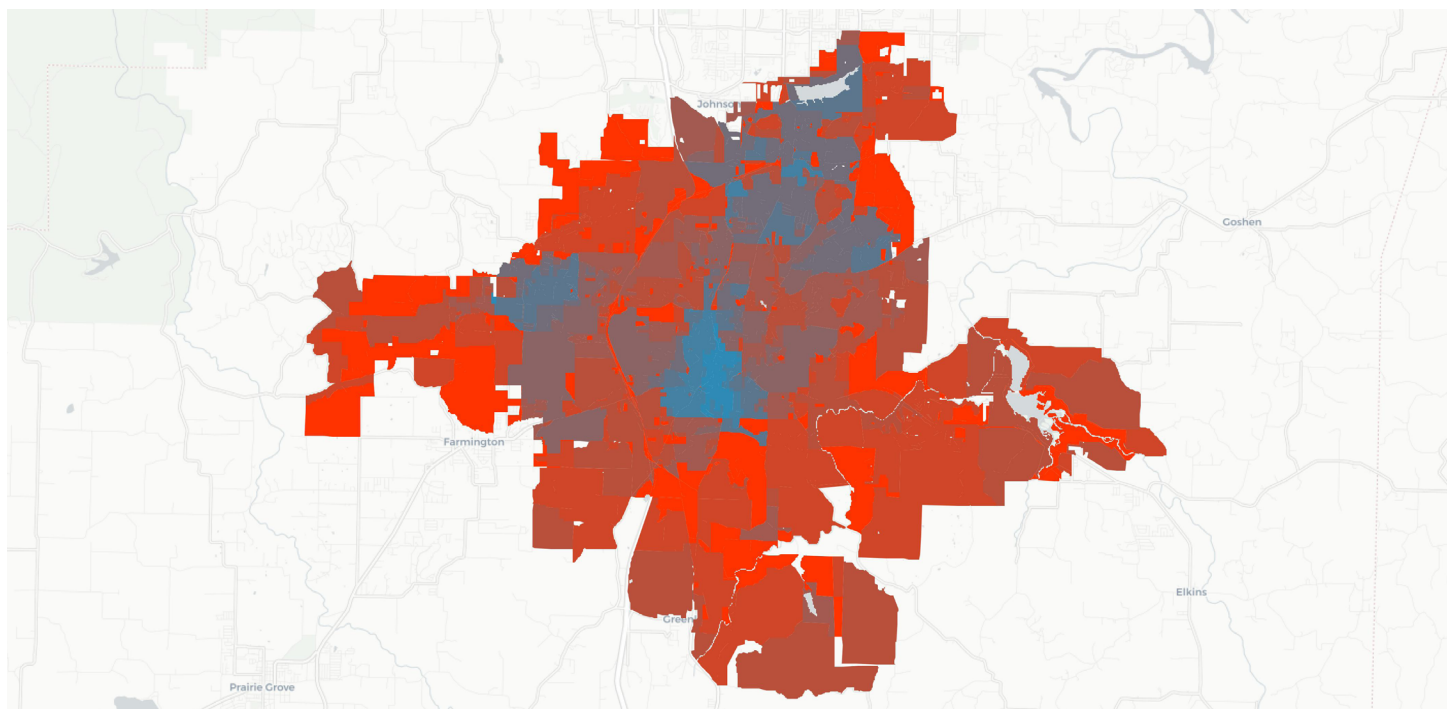
## ACCELERATION |

Measures the city's commitment to growing bicycling quickly.

**4.6**

|                                      |     |
|--------------------------------------|-----|
| Growth in bike facilities and events | 4.9 |
| Perceptions of progress              | 3.8 |

★★★★★



- » **WHAT IS IT?** The Bicycle Network Analysis (BNA) is data analysis software that measures how well the bike network in a city connects people with the places they want to go safely and comfortably.
- » **WHAT CAN IT TELL ME?** The BNA rates every street within a city as high or low stress and analyzes where the network is strong and where it is weak. A city's BNA score factors into its City Ratings Network and Reach scores.

## DID YOU KNOW?

**32% of Americans ages 3 and older rode a bicycle in the past year**

Learn more from the U.S. Bicycling Participation Study  
[peopleforbikes.org/resources/u-s-bicycling-participation-report/](http://peopleforbikes.org/resources/u-s-bicycling-participation-report/)

- » **SPEED LIMITS IN THE BNA.** Speed limits play an important role in street safety and in the BNA. Since most city streets are in residential areas, speed limits on residential streets can have a large impact on the BNA score.

Residential speed limits  $\leq 25$  mph create **low-stress** streets for bikes.

Residential speed limits  $> 25$  mph create **high-stress** streets for bikes.

Fayetteville, AR's residential speed limit is\*

20 mph

\*Based on state law and City Snapshot submissions

## ADDITIONAL RESOURCES

- » **A Guide for City Leaders**  
Identify strategies to address common barriers to building great bicycling infrastructure.  
[peopleforbikes.org/placesforbikes/resources/](http://peopleforbikes.org/placesforbikes/resources/)
- » **PeopleForBikes Community Grant Program**  
Non-profit organizations and local governments can apply for funding for bicycle projects and advocacy initiatives. [peopleforbikes.org/apply-now/](http://peopleforbikes.org/apply-now/)
- » **Advocacy Alert Program**  
Local and state advocacy groups can apply to communicate and share their issue with PeopleForBikes supporters in their area.  
[peopleforbikes.org/local-engagement-portal/](http://peopleforbikes.org/local-engagement-portal/)
- » **Better Bike Share Partnership**  
Learn best practices for engaging underserved communities through bike share programs.  
[betterbikeshare.org](http://betterbikeshare.org)
- » **Ride Spot**  
Find, create and share bike rides and events in your area with an app designed to help connect people with great places to ride. [ridespot.org](http://ridespot.org)
- » **E-Bike Regulations**  
Review a comprehensive list of e-bike regulations in each state. [peopleforbikes.org/our-work/e-bikes](http://peopleforbikes.org/our-work/e-bikes)